

ISAF M.TG srl Via B. Parodi, 286/A 16010 Ceranesi - Genoa Italy
 Tel. 010781793 - 0107848136 Fax 0107268816 e-mail: info@isafmtg.com

Type **SAC-LP** Datasheet **12.5.20.8**
 Rev. 0 Date 02/03/2003 Page 1/1

CONFIGURATION

Horizontal cylindrical vessel on saddles, complete with connections for plant and with the accessories requested by the classification society.

APPLICATION

Installation on compressed air lines for automatism and various services.

DESIGN CONDITIONS

Max. Pressure 8 bar
 Max. Temperature 50 °C
 Min. Temperature 0 °C

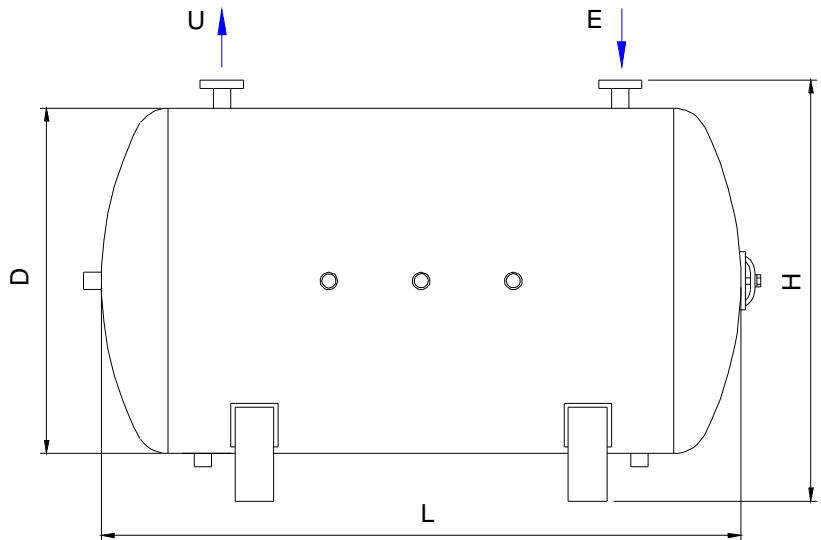
SPECIAL PLANTS

Particular constructions are realized on customer's specification.

ACCESSORIES AND COMPONENTS

ISAF systems can be supplied complete with monitoring equipments, valves, switchboards and other accessories which assure their proper functioning.

For an easier installation a wide range of components can be supplied.



TESTS

RINA - ABS - LR - BV - GL - DNV - MMI

MATERIALS

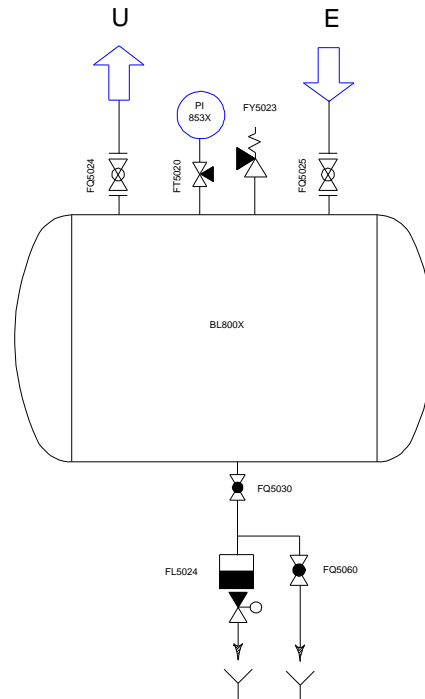
A1 STEEL P 265 GH
 A2 STEEL P 355 NH
 A3 ASTM A 106 B
 X AISI 304 L
 XX AISI 316 L

CONNECTIONS

Threaded BSP - NPT
 Flanged UNI - DIN - ASME - JIS

TREATMENTS

Treatment of internal and external surfaces according to the application of the plant.



All information and data shown on this datasheet can be modified without notice

Standard flanges: UNI2278/67 NP16

Model	Capacity Lt.	Max.Design Pressure bar	D	HT	L	H	E - U	Weight Kg.
SAC-LP500H	500	8	600		1900	950	ND32	310
SAC-LP1000H	1000	8	800		2100	1150	ND40	420
SAC-LP1500H	1500	8	950		2300	1300	ND50	540
SAC-LP2000H	2000	8	1100		2300	1450	ND50	660
SAC-LP3000H	3000	8	1300		2450	1650	ND80	960
SAC-LP5000H	5000	8	1600		2700	1950	ND80	1320