

ISAF M.TG srl Via B. Parodi, 286/A 16010 Ceranesi - Genoa Italy  
 Tel. 010781793 - 0107848136 Fax 0107268816 e-mail: info@isafmtg.com

Type **TERIS** Datasheet **19.5.30.6**  
 Rev. 0 Date 02/03/2003 Page 1/1

### CONFIGURATION

Vertical cylindrical vessel with supports for floor installation, complete with thermal insulation, switchboard, electrical heaters, heat exchanger and with the accessories requested by the classification society.

### APPLICATION

Production and storage of hot water for sanitary use.

### DESIGN CONDITIONS

Max. Pressure 6 bar  
 Max. Temperature 90 °C  
 Min. Temperature 0 °C

### SPECIAL PLANTS

Particular constructions are realized on customer's specification.

### ACCESSORIES AND COMPONENTS

ISAF systems can be supplied complete with monitoring equipments, valves, switchboards and other accessories which assure their proper functioning.

For an easier installation a wide range of components can be supplied.

### TESTS

RINA - ABS - LR - BV - GL - DNV - MMI

### MATERIALS

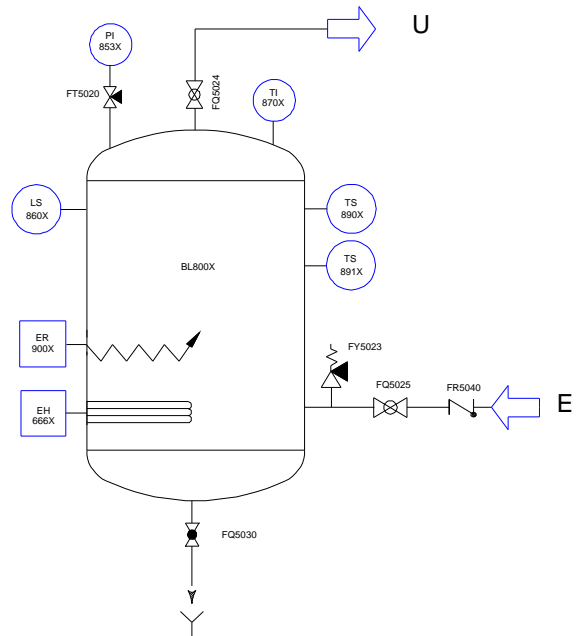
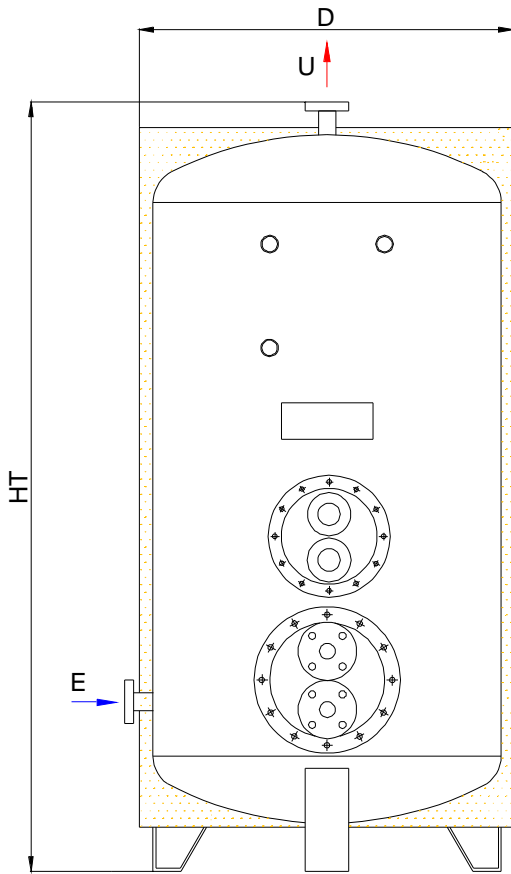
A1 STEEL P 265 GH  
 A2 STEEL P 355 NH  
 A3 ASTM A 106 B  
 X AISI 304 L  
 XX AISI 316 L

### CONNECTIONS

Threaded BSP - NPT  
 Flanged UNI - DIN - ASME - JIS

### TREATMENTS

Treatment of internal and external surfaces according to the application of the plant.



All information and data shown on this datasheet can be modified without notice

Standard flanges: UNI2278/67 NP16

Model	Capacity Lt.	Max.Design Pressure bar	Power Kcal/h	Power kW	D	HT	L	H	E - U	Weight Kg.
TERIS500V	500	6	14200	5+5	700	2050			ND32	168
TERIS750V	750	6	20900	7,5+5	900	1850			ND40	210
TERIS1000V	1000	6	28400	7,5+7,5	900	2400			ND40	310
TERIS1500V	1500	6	42600	10+10	1050	2550			ND50	395
TERIS2000V	2000	6	56300	25	1200	2570			ND50	555
TERIS3000V	3000	6	67600	30	1400	2710			ND80	850